

# What you need to know...

As a parent/guardian, you probably have several questions about The Learning Institute (TLI) and what purpose we serve in your child's educational experience. At TLI, our mission is to help school districts improve student achievement. By providing assessments and other services to schools, we equip districts with the necessary data to make decisions that will improve your child's quality of education.

## Our Qualifications

Time is precious in the classroom, and at TLI, one of our goals is to help teachers assess and remediate students quickly and effectively. TLI has been working with schools since 2005 to create a program that benefits those who use it and now serves approximately 2/3 of the student population across Arkansas. Our educational and technical staff is dedicated to providing excellent customer service to members in need. The curriculum team is staffed with professionals who have all been teachers and know firsthand what it takes to succeed in the classroom.

## Testing

When a district joins TLI, teachers use their current lesson plans to create an assessment map that will be followed throughout the year. This assessment map is broken down into no more than 8 modules with one assessment for each module. The number of modules and assessments given during the year is a decision made by each district. The assessment maps are specific to each district, grade level, and subject area. TLI creates assessments based on the assessment map, so only the material taught during that module appears on the student assessment. TLI only tests skills found on the assessment map.

## After a Test

Once students have taken an assessment, results are posted to TLI's secure website. Only teachers and school administrators responsible for your child during the school day can access the scores. The data received from the assessments can help teachers quickly identify academic strengths and weaknesses for your child. Once those areas have been identified, teachers can then begin to enhance the student's knowledge of necessary skills – rather than spend time on skills your student has already mastered.

## Grades

Each school district must decide if TLI test scores will be given as a grade. TLI's assessments are written at grade level to meet state standard requirements and are in many ways more rigorous than a typical classroom test. For this reason, TLI provides teachers with an adjusted score for a more reasonable grade in a grade book.

## Other Services

TLI provides several other services to districts including professional development, curriculum support, and data storage and reporting. Our professional development opportunities for teachers and school administrators range from improving teaching/curriculum strategies to technical support for TLI reports. Quiz builder is a resource for teachers to use to support instruction and remediation. TLI also warehouses a variety of data for districts so access to all pertinent information is available on one website.

## Questions

As parents ourselves, we appreciate your desire to learn about TLI and the assessments we provide to your students. It's important that you understand the process so you can ask the necessary questions to nourish your child's education at home.

- When are the test dates?
- What can I do to prepare my child at home?
- How is my child performing on the TLI assessments?
- Are there any skills I need to help reinforce?
- Can my child receive any special accommodations on TLI tests?

For specific information about TLI's program in your student's school and classroom, please contact your school district's administration office.



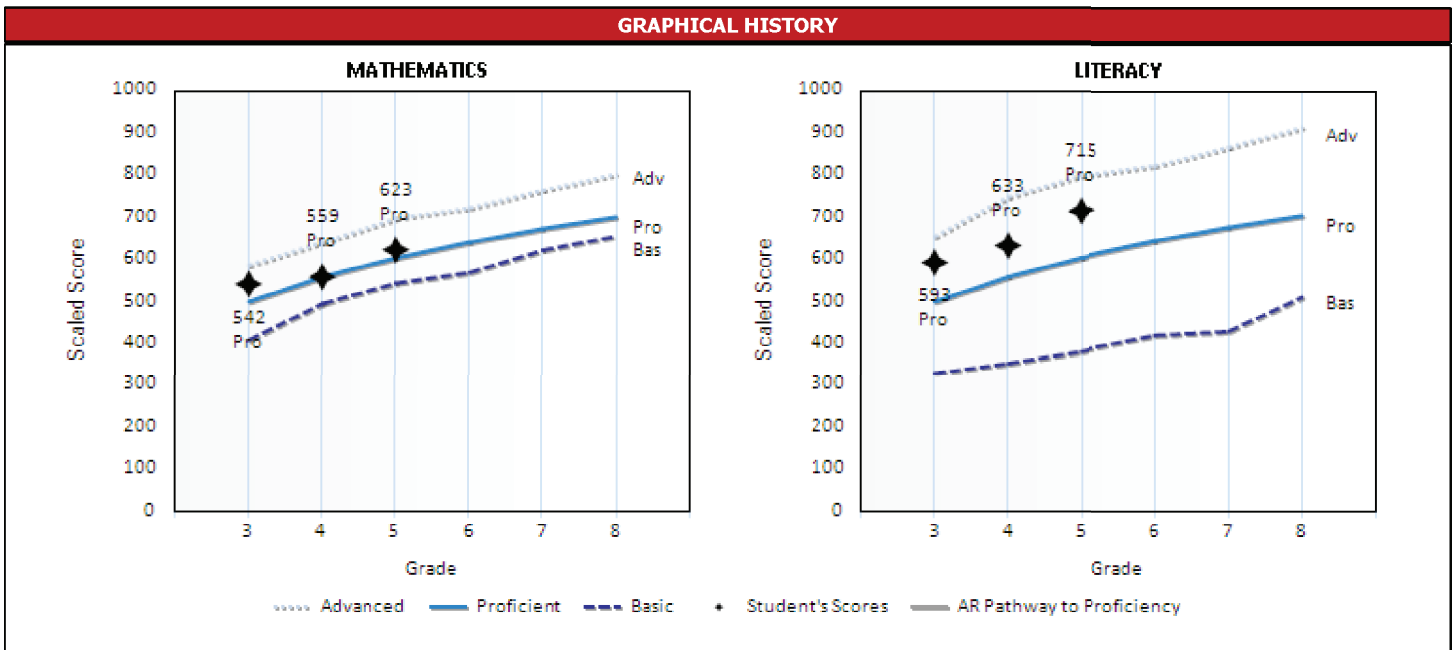
# Benchmark History

(for students in grades 4-8)

ARKANSAS BENCHMARK EXAMINATIONS																
LITERACY																
			READING								WRITING					
			Score		Literary		Content		Practical		MC	Con	Style	SF	Usage	Mech
Year	Grade	Perf. Level	Scaled	Raw	MC	OR	MC	OR	MC	OR						
10-11	05	3 - Prof.	715	71.5	6 / 8	2 / 8	6 / 8	7 / 8	7 / 8	6 / 8	3 / 8	5.5 / 8	5.5 / 8	7.5 / 8	8 / 8	8 / 8
09-10	04	3 - Prof.	633	59	2 / 8	2 / 8	5 / 8	4 / 8	6 / 8	4 / 8	6 / 8	6 / 8	6 / 8	6.5 / 8	5.5 / 8	6 / 8
08-09	03	3 - Prof.	593	62.5	6 / 8	6 / 8	6 / 8	3 / 8	4 / 8	2 / 8	7 / 8	5 / 8	5 / 8	6.5 / 8	5.5 / 8	6.5 / 8

MATHEMATICS														
			Score		NO		ALG		G		M		DAP	
Year	Grade	Perf. Level	Scaled	Raw	MC	OR	MC	OR	MC	OR	MC	OR	MC	OR
10-11	05	3 - Prof.	623	32	4 / 8	2 / 8	3 / 8	6 / 8	7 / 8	2 / 8	4 / 8	0 / 8	4 / 8	0 / 8
09-10	04	3 - Prof.	559	35	6 / 9	0 / 8	5 / 9	4 / 8	6 / 8	0 / 8	5 / 7	4 / 8	3 / 7	2 / 8
08-09	03	3 - Prof.	542	44	5 / 9	4 / 8	6 / 9	8 / 8	7 / 8	0 / 8	4 / 7	2 / 8	4 / 7	4 / 8

SCIENCE													
			Score		NS		LS		PS		ESS		
Year	Grade	Perf. Level	Scaled	Raw	MC	OR	MC	OR	MC	OR	MC	OR	
10-11	05	2 - Basic	169	28	3 / 5	1 / 8	2 / 11	5 / 16	8 / 12	0 / 8	6 / 12	3 / 8	



Passing scores display above the blue 'Pro' line.

Stars represent student scores for each grade level.

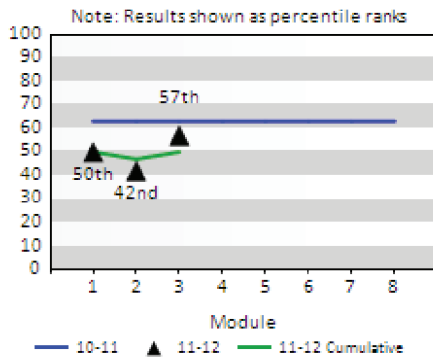
For specific information about TLI's program in your student's school and classroom, please contact your school district's administration office.



# Student Progress

## THE LEARNING INSTITUTE PROGRESS REPORTS

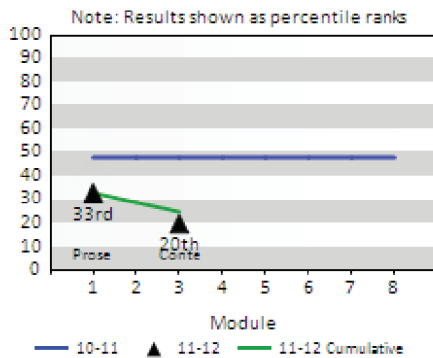
### Math - Grade 7



#### Potential Remediation Topics (Module(s): 1,2,3,4,5,6,7,8)

- NO.1.7.1a - (0/2) - Relate, with and without models and pictures, concepts of ratio and proportion
- NO.2.7.2f - (1/2) - Apply the multiplication and division properties of equality to one-step equations with decimals
- M.13.7.5b - (1/4) - Apply ratio and proportion properties of congruent or similar triangles to solve problems involving missing lengths and angle measures
- NO.2.7.2d - (1/2) - Apply the multiplication and division properties of equality to one-step equations with fractions
- A.5.7.1a - (1/2) - Solve and graph one-step linear equations using a variety of methods (i.e., hands-on, inverse operations, symbolic) with real world application with and without technology
- G.8.7.6 - (1/2) - Develop the properties of similar figures (Ex. ratio of sides and congruent angles)
- M.13.7.5a - (1/4) - Apply scale factor properties of congruent or similar triangles to solve problems involving missing lengths and angle measures
- M.12.7.2a - (1/2) - Understand relationships among units within the customary system
- M.12.7.2b - (1/2) - Understand relationships among units within the metric system

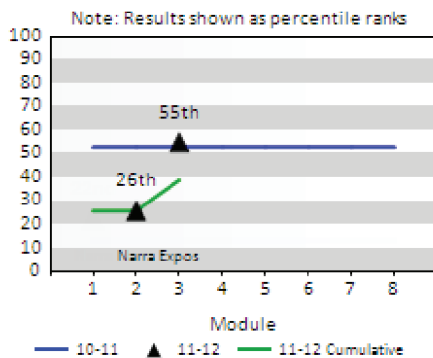
### Reading - Grade 7



#### Potential Remediation Topics (Module(s): 1,2,3,4,5,6,7,8)

- Author's Purpose - (0/1)
- Analysis - (0/1)
- Article Details - (0/1)
- Research Skills - (0/1)
- Inference - (1/3)
- Vocabulary - (1/2)

### Writing - Grade 7



#### Potential Remediation Topics (Module(s): 1,2,3,4,5,6,7,8)

- Prepositional Phrases - (0/2)
- Pronouns - (0/1)
- Fragments/Run-Ons - (0/1)
- Commas - (0/1)
- Pronouns - (0/1)
- Edit for Punctuation - (1/2)
- Subject-Verb Agreement - (1/2)
- Parts of Speech - (1/2)
- Complements - (1/2)

Progress is shown when the green line is above the blue line in the graphs.

Areas where your child needs improvement are listed to the right of each graph.

For specific information about TLI's program in your student's school and classroom, please contact your school district's administration office.



# TLI Summary

## THE LEARNING INSTITUTE INTERIM ASSESSMENTS

### LITERACY - READING

Year	Group	Module	Comb-Adj	Passage	MC (SPOTCheck)	OR	
11-12	Grade 7	1	79%	Literary Prose	6 of 8 (Pro)	2 of 4	
					<b>Total Score:</b>	<b>6 of 8</b>	<b>2 of 4</b>
					<b>Average:</b>	<b>75%</b>	<b>50%</b>
					<b>Adjusted:</b>	<b>87%</b>	<b>71%</b>

Note: The SPOTCheck gives an estimate of the ACTAAP performance level (for Combined: Prof or Not Proficient; for MC only: Adv, Prof or Not Proficient) corresponding to the student's module score. For the best available forecast of a student's likely ACTAAP outcome, use the official forecast shown at the top of this report.

### LITERACY - WRITING

Year	Group	Module	Comb-Adj	Con	Style	SF	Usage	Mech	OR Total	MC (SPOTCheck)
11-12	Grade 7	2	79%	2 of 4	2 of 4	3 of 4	3 of 4	3 of 4	13 of 20	4 of 8 (Pro)
		3	87%	4 of 4	3 of 4	3 of 4	3 of 4	3 of 4	16 of 20	5 of 8 (Adv)
<b>Total Score:</b>				<b>6 of 8</b>	<b>5 of 8</b>	<b>6 of 8</b>	<b>6 of 8</b>	<b>6 of 8</b>	<b>29 of 40</b>	<b>9 of 16</b>
<b>Average:</b>				<b>75%</b>	<b>62%</b>	<b>75%</b>	<b>75%</b>	<b>75%</b>	<b>72%</b>	<b>56%</b>
<b>Adjusted:</b>				<b>87%</b>	<b>79%</b>	<b>87%</b>	<b>87%</b>	<b>87%</b>	<b>85%</b>	<b>75%</b>

MATHEMATICS					
Year	Group	Module	Comb-Adj	MC (SPOTCheck)	OR
11-12	Grade 7	1	44%	8 of 20 (Pro)	0 of 4
		2	88%	12 of 20 (Adv)	4 of 4
		3	48%	10 of 20 (Pro)	0 of 4
<b>Total Score:</b>				<b>30 of 60</b>	<b>4 of 12</b>
<b>Average:</b>				<b>50%</b>	<b>33%</b>
<b>Adjusted:</b>				<b>71%</b>	<b>58%</b>

Number of correct answers for the multiple choice section

SCIENCE					
Year	Group	Module	Comb-Adj	MC	OR
11-12	Grade 7	1	58%	9 of 20	1 of 4
<b>Total Score:</b>				<b>9 of 20</b>	<b>1 of 4</b>
<b>Average:</b>				<b>45%</b>	<b>25%</b>
<b>Adjusted:</b>				<b>67%</b>	<b>50%</b>

Number of points received for the open response question